

# Building on the Walden Experience

1967 The Walden School commences as a Montessori Preschool.

1968 Walden incorporates as a non-profit organization with a board of directors.

1971 Grades 1, 2 and 3 are added.

1974 Grades 4, 5 and 6 are added.

1978 Extended day hours are offered.

1988 Grades 7 and 8 are added. Directors of Admissions and Parent Relations are appointed. Arts and Science Department is created.

1990 Assistant Head of School is appointed. Development Office is established. Business Office is established.

1999 The Walden School purchases the former Sandy Bank Elementary School in Media, PA after residing in six different rental locations.

2002 The Walden School is accredited by the Pennsylvania Association of Independent Schools (PAIS).

2006 Middle school laptop program initiated.

2007 Installation of SmartBoards and faculty laptop program in grades 1 to 4.



“People here develop a place in their heart for Walden.”



“The new building will make Walden perfect.”



## Ways to give:

### PLEDGES

You may fulfill your gift/pledge over three years in whatever manner you decide most appropriately fits your budget and maximizes your tax advantage. Gifts are tax deductible.

### MATCHING GIFTS

More than 500 companies offer to match the charitable contributions of their employees. You may want to contact your human relations department to see if your employer offers this benefit.

### APPRECIATED ASSETS

Donations of appreciated assets (stocks or other securities for example) offer opportunities for donors to enjoy certain tax advantages.

### NAMING OPPORTUNITIES

To learn more about naming opportunities through this campaign, please speak with the Development Office at 610-892-9357.

### DEFERRED GIFTS

You may wish to remember The Walden School in your will by setting up a living trust, making an outright bequest or participating in one of a number of ways to maximize tax advantages.

## Mission Statement

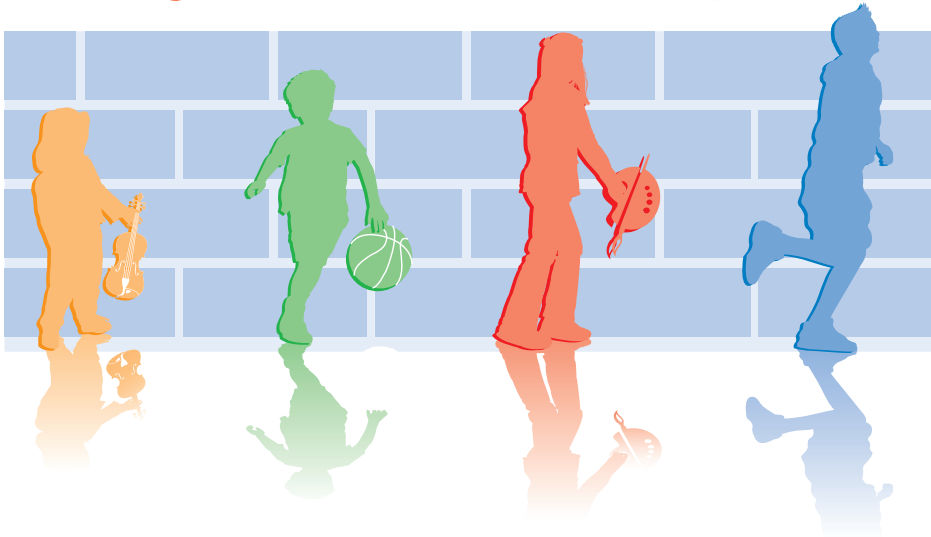
*The Walden School’s purpose is to offer a child-centered education based on the Montessori philosophy of developing the whole child in a nurturing and caring environment. The school provides a process-oriented preschool through middle school curriculum to a diverse community of learners that affirms a child’s innate joy of discovery.*



**The Walden School**  
901 N. Providence Road  
Media, PA 19063  
(610) 892-8000  
[www.thewaldenschool.org](http://www.thewaldenschool.org)



## Building on the Walden Experience



## A Capital Campaign





Dear Friends,

As we mark the ninth year on Providence Road, it is a good time to reflect on the Walden experience. The Walden School continues to provide a well-respected Montessori foundation for its preschool students. The Elementary/Middle School emphasizes solid learning in academic, social and ethical growth for its students. All this happens within a healthy and supportive environment that teaches values and learning as part of the fabric of its 21st century curriculum.

As we embark on "Building on the Walden Experience", the future holds much promise. This building project will provide the necessary space to promote the arts, physical fitness and the school community as a whole. With the help of the Capital Campaign volunteers, funds will be raised to increase opportunities for program growth and augment the sustainability of the Walden experience for the entire school community.

Enthusiasm abounds among us as we begin the next phase of expansion. "Building on the Walden Experience" will foster participation in the mission and bring additional life to the school community. We have much to be thankful for and much to look forward to – let us all work for good things for the experience we know as Walden.

Cynthia K. Stein  
Head of School



## A Letter from Cynthia

# Project Details

## Overall Project Scope

**\$2.5 million**

Construction of a new 7,500-square-foot multipurpose building with classroom space to expand the existing music and art programs, theatrical performance and athletic "flex" space, bathrooms, kitchen, and storage, as well as extensive site improvements across the campus to reorient the school buildings, improve vehicular and pedestrian traffic flow, and ensure student safety.

## Lobby Area with Restrooms

Nearly 1,000 square feet of spacious entrance lobby and reception area with sky-lit display spaces, direct access to classroom space and stage, handicapped-accessible restrooms, and ramp to gymnasium.

## Art Room

Over 625 square feet of dedicated space for the process and discovery of art. Classroom facilities to include instruction, work and display space, sinks, storage, and kiln.

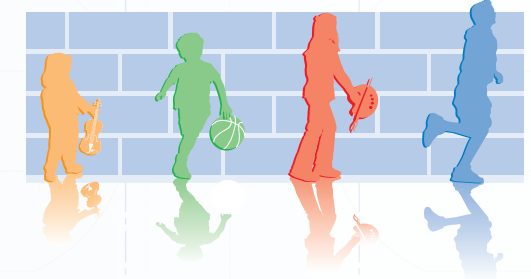
## Music Room

Approximately 400 square feet of dedicated space for the exploration and creation of music. Classroom facilities to include teaching and performance space, instrument acquisition and storage, as well as direct access to the stage for group rehearsals and recitals.

## Stage

350 square feet of performance space for music, theater, and public speaking. Handicapped-accessible proscenium stage designed to be used with the adjacent athletic space for small gatherings or large group activities, such as Back to School Night, parent orientations, graduation, concerts, award ceremonies, inductions, and fundraising events.

Building on the **Walden** Experience



## Gym

4,800 square feet of fitness, athletic, and community space. Expands the physical education and sports programs, and allows for year-round indoor school and additional opportunities for rentals and broader community use.

## Kitchen

100 square feet of serving kitchen expands the use of the multipurpose stage and gymnasium space for school, community events, and rentals that require or would benefit from the preparation and serving of refreshments and food.

## Site Improvements

New school entrance on Providence Road (Route 252) shared with the Upper Providence Township municipal complex, including a perimeter access way running the entire length of the property and exiting onto Sandy Bank Road, in order to improve circulation, on-site bus and passenger car queuing, and emergency vehicle access. The creation of an exterior gathering space or "Campus Green" located between the current and new facilities, along with two new parking lots, fencing, sidewalks, walkways, and nature path linking both ends of the campus.



**The Walden School**

*Celebrating 40 Years*

The campaign seeks to raise a minimum of \$450,000, with every dollar pledged applied directly to the project. The more funds we can raise, the less debt we incur. We invite you to join us in support of this campaign. The projected range of gifts allows giving over multiple levels. We encourage you to consider what your own personal level of philanthropic support will be.